

# Activated Carbon Bed

# AC



## *AC Series*



**MADE IN THE U.S.A.**

**PSB INDUSTRIES INC.  
ISO 9001:2008 CERTIFIED**

# AC Activated Carbon Bed

PSB model AC is designed to selectively remove organic compounds containing three or more carbon atoms by utilizing activated carbon adsorbent. Large organic compounds more readily condense and form sludge which can hinder the performance of certain gas systems. The PSB model AC is ideal for preventing the build-up of sludge and drip gases by removing these large organic compounds before they enter the gas system. The adsorbent works in-part by its strict selectivity of oil based compounds. This selectivity maximizes the amount and purity of the product gas.

When the initial charge of adsorbent has reached maximum saturation capacity, it can be replaced. PSB's standard package also includes two sample ports to test gas purity.

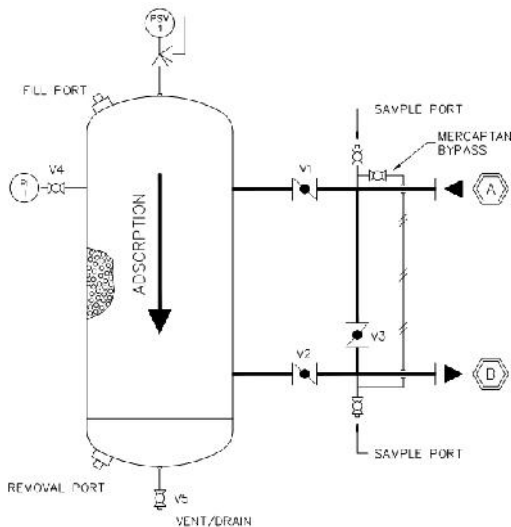
Some (but not all) types of mercaptan odorants can be removed from natural gas streams by the PSB model AC. Therefore, PSB includes a mercaptan bypass line to insure the safety of the user and the final customer.

PSB Model	Flow Capacity SCFM @ PSIG 20/100	Process Connections Inches	Dimensions Inches			Package Weight lbs.
			L	W	H	
AC10-1.0	50 / 100	1.0 NPT	24	18	86	430
AC14-1.5	145 / 510	1.5 FLG	24	18	86	710
AC18-1.5	145 / 510	1.5 FLG	27	20	88	910
AC20-2	260 / 690	2 FLG	30	22	88	1290
AC24-2	260 / 835	2 FLG	36	27	92	1400
AC24-3	525 / 1,150	3 FLG	42	27	92	1450
AC30-3	525 / 1,600	3 FLG	48	32	100	2000
AC30-4	615 / 2,160	4 FLG	49	32	100	2100
AC36-3	525 / 2,400	3 FLG	58	38	100	2700
AC36-4	900 / 2,500	4 FLG	63	38	100	3000
AC36-6	1,900 / 3,500	6 FLG	63	38	100	3120

Specifications and information subject to change. Contact factory for your specific application.

## DESIGN FEATURES

### TYPICAL FLOW DIAGRAM PSB TYPE AC



- Adsorber vessel designed, manufactured, and per ASME code Section VIII
- Stainless steel adsorbent screens
- Includes pressure relief valve (200 PSIG standard)
- Three valve system block and bypass package
- Initial charge of adsorbent installed
- Two (2) sample ports
- Higher design pressure options (>200 PSIG) available
- Mercaptan bypass line



**PSB Industries Inc.**  
 1202 West 12<sup>th</sup> Street  
 Erie, PA. USA  
 Phone: 814-453-3651  
 Fax: 814-454-3492  
[www.PSBINDUSTRIES.com](http://www.PSBINDUSTRIES.com)